





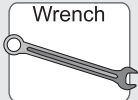




# Installation Instructions Oversize Tire Carrier

## Vehicle Application:

- Jeep JK Wrangler and Wrangler Unlimited  
2007 – Current  
Part Number: 61961

[www.Bestop.com](http://www.Bestop.com) - We're here to help! Visit our web site and click on "[Ask a Question](#)". Click here for more [Jeep® Accessories by Bestop](#).

INSTALLATION TIME	SKILL LEVEL		
 <b>3/4 Hour</b>	 <b>2 - Moderately Easy</b>		
TOOLS			
 T20		 13mm and 7/16"	
 Safety Glasses			



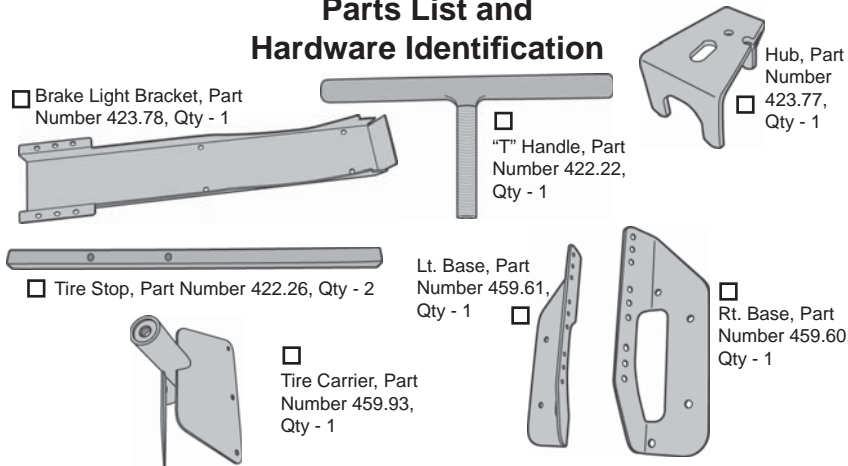
**! WARNING** This product is designed primarily to enhance the appearance of the vehicle. Do not rely in any way on the components of this product to protect against injury or death in the event of an accident. Never operate the vehicle in excess of manufacturer's specifications.

### WEAR SEAT BELTS AT ALL TIMES

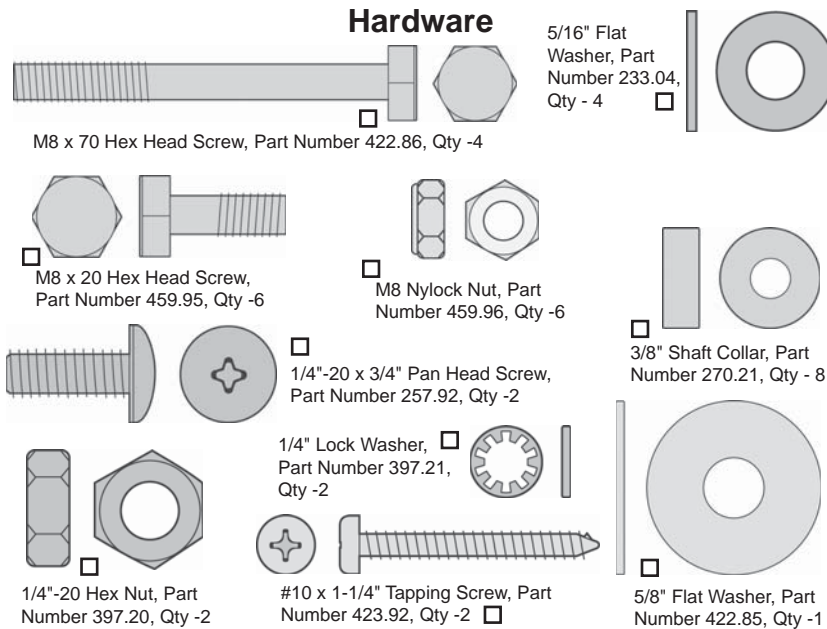
Read and follow, precisely, all installation instructions provided when installing product. Failure to do so may result in a poor fit and could place occupants of the vehicle in a potentially dangerous situation.

# Oversize Tire Carrier Installation Instructions

## Parts List and Hardware Identification

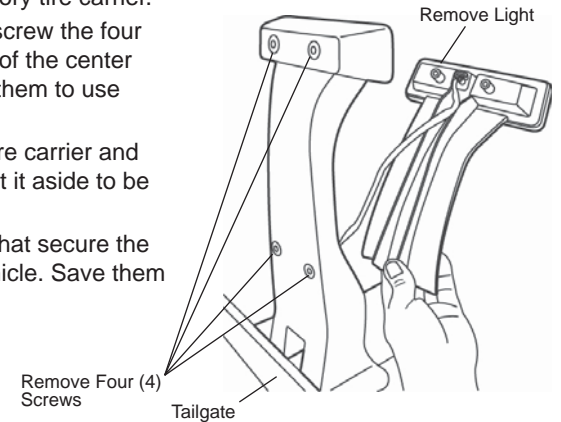


## Hardware



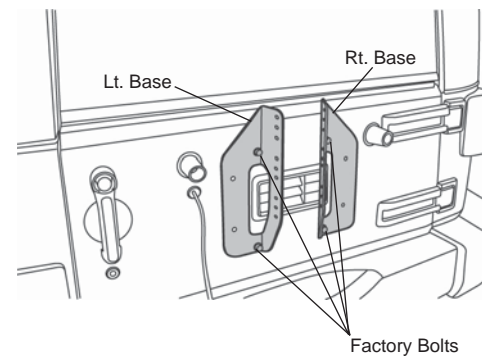
## 1 Remove Factory Tire Carrier

Remove spare tire from factory tire carrier. Use a T20 Torx driver to unscrew the four (4) screws on the front side of the center brake light. Save two (2) of them to use again later. Remove the light from the tire carrier and unplug it from the wiring. Set it aside to be reused later. Remove the eight (8) bolts that secure the factory tire carrier to the vehicle. Save them to be used again later.



## 2 Mount Bases to Tailgate

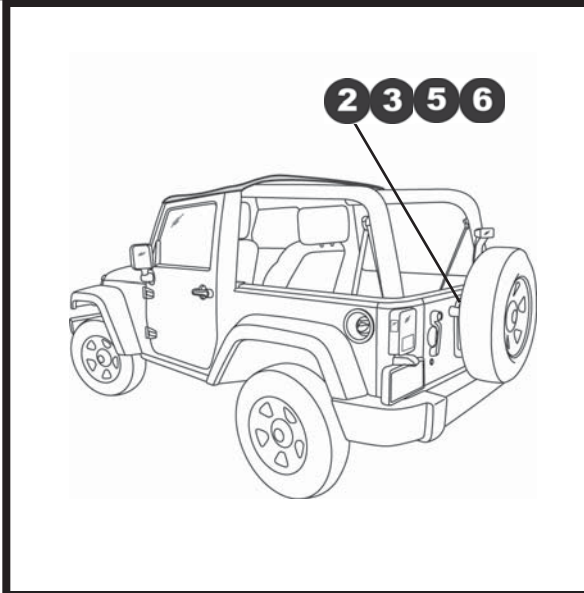
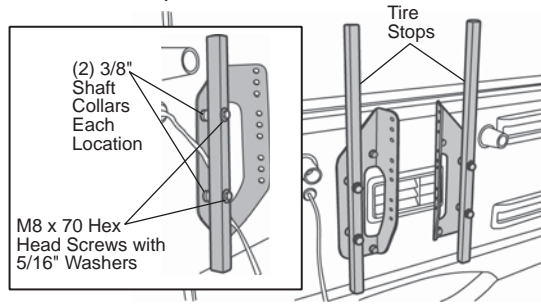
Use the original factory bolts to mount each Base to the tailgate. Align the in-board holes in the Bases with the holes in the tailgate. Leave the bolts loose.



# Oversize Tire Carrier Installation Instructions

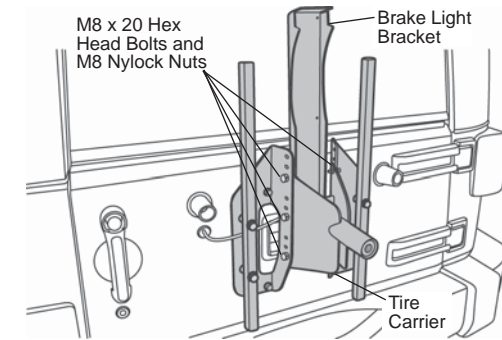
## 3 Install Tire Stops

Orient a Tire Stop so the end farthest from any hole is toward the top. Mount each Tire Stop to the outboard set of holes in the Bases. Use an M8 x 70 Hex Head Screw, a 5/16" Flat Washer and two (2) 3/8" Shaft Collars between the Stop and the Base in each hole. Be sure the brake light wire is between the carrier and the Tire Stop. Leave the fasteners loose.



## 6 Mount Tire Carrier to Tailgate

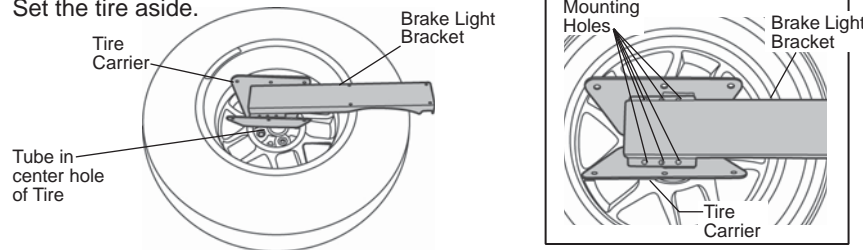
Place the Tire Carrier between the Bases. Line up the bottom mounting hole of the Carrier with the hole selected in the last step. Use six (6) M8 x 20 Hex Head Bolts and M8 Nylock Nuts to secure the Carrier to the Bases. Fully tighten all fasteners including those from Steps 2 and 3.



## 4 Position Tire on Tire Carrier

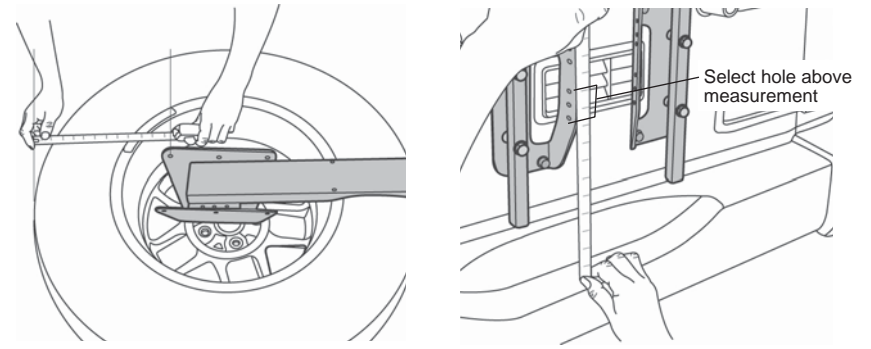
Place the outside of the tire on the ground and set the tube of the Tire Carrier into the center hole of the wheel. Push the top of the tire carrier tube against the center hole. Lay the Brake Light Bracket on the Tire Carrier between the two mounting flanges. Place the Brake Light Bracket so the lens of the light will be above the tire. Select the best set of mounting holes in the bracket and install the two (2) 1/4"-20 x 3/4" Pan Head Screws, 1/4" Lock Washers and 1/4"-20 Hex Nuts.

Set the tire aside.



## 5 Measurement

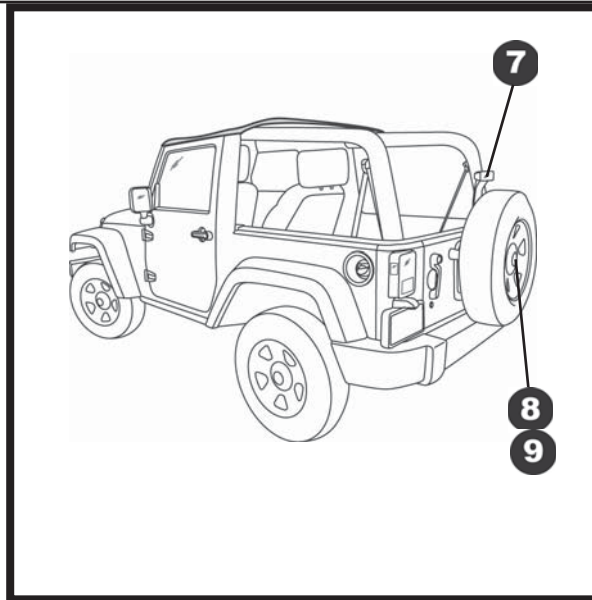
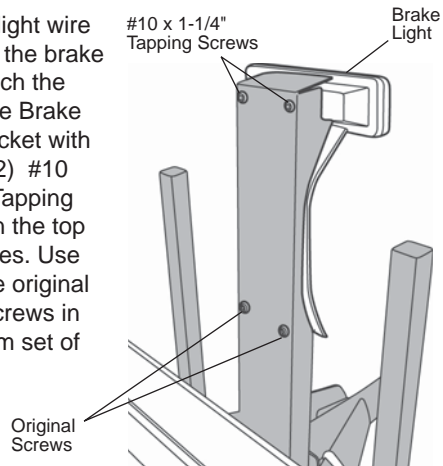
Set the Tire Carrier back on top of the tire. Measure from the bottom of the tire to a bottom mounting hole. Then measure up the same distance from the bumper. Select a hole in the Base that is directly above the measured distance.



## Oversize Tire Carrier Installation Instructions

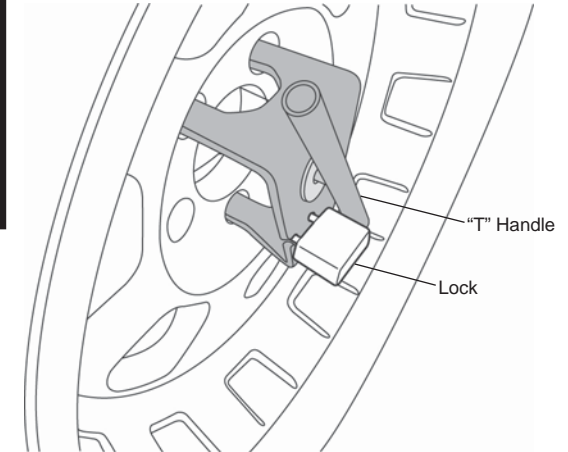
### 7 Re-install Brake Light

Plug the light wire back into the brake light. Attach the light to the Brake Light Bracket with the two (2) #10 x 1-1/4" Tapping Screws in the top set of holes. Use two of the original factory screws in the bottom set of holes.



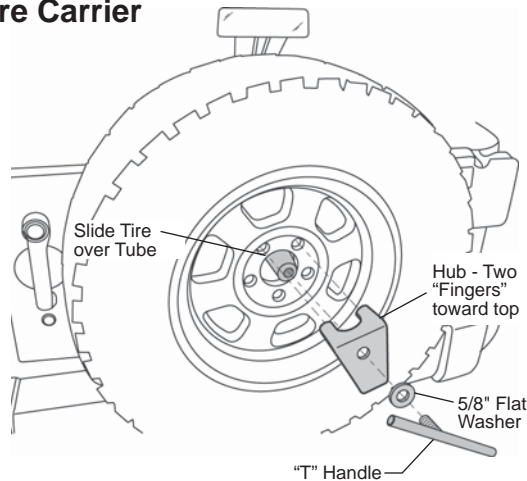
### 9 Locking the Tire Carrier

The hole and notch in the Hub are provided so you can lock the tire with a padlock if desired. A No.3 Master Lock with a 3/4" tall shackle works well. Insert the open end of the lock shackle into the hole with the other end of the lock shackle in the notch and close the lock. The body of the lock needs to be long enough to prevent the "T" Handle from turning and the shackle needs to be short enough so it will not rotate out of the way of the "T" Handle.



### 8 Install Tire on Tire Carrier

Lift the spare tire and position the center hole of the wheel onto the Tire Carrier tube. Place each finger of the Hub into a wheel stud hole so that the end of the hub with the two fingers is on top. Install the "T" Handle and 5/8" Flat Washer. Tighten the "T" Handle until the tire is compressed tight against the Tire Stops.



## **Oversize Tire Carrier Installation Instructions**

---

### **LIMITED WARRANTY**

We warrant our product to be free from defects in material and workmanship, for the terms specified below, provided there has been normal use and proper maintenance. This warranty applies to the original purchaser only. All remedies under this warranty are limited to the repair or replacement of any item or items found by the factory to be defective within the time period specified. If you have a warranty claim, first you must call our factory at the number below for instructions. You must retain proof of purchase and submit a copy with any items returned for warranty work. Upon completion of warranty work, if any, we will return the repaired or replaced item or items to you freight prepaid. Damage to our products caused by accidents, fire, vandalism, negligence, misinstallation, misuse, Acts of God, or by defective parts not manufactured by us, is not covered under this warranty.

THE WARRANTY TIME PERIOD IS AS FOLLOWS FOR REPLACE-A-TOP™, SAILCLOTH REPLACE-A-TOP™, SUPERTOP®, SUPERTOP® REPLACEMENT SKINS, SUNRIDER®, AND TIGERTOP®: TWO YEARS FROM DATE OF PURCHASE.

THE WARRANTY TIME PERIOD IS AS FOLLOWS FOR ALL OTHER “SOFT GOODS” MANUFACTURED BY OUR COMPANY (USING PRIMARILY VINYL, PLASTICS, AND/OR FOAM): ONE YEAR FROM DATE OF PURCHASE.

THE WARRANTY TIME PERIOD IS AS FOLLOWS FOR ALL OTHER “HARD GOODS” MANUFACTURED BY OUR COMPANY (USING PRIMARILY METALS, PLASTICS, AND/OR FIBERGLASS): ONE YEAR FROM DATE OF PURCHASE.

ANY IMPLIED WARRANTIES OF MERCHANTABILITY AND/OR FITNESS FOR A PARTICULAR PURPOSE CREATED HEREBY ARE LIMITED IN DURATION TO THE SAME DURATION AND SCOPE AS THE EXPRESS WRITTEN WARRANTY. OUR COMPANY SHALL NOT BE LIABLE FOR ANY INCIDENTAL OR CONSEQUENTIAL DAMAGE.

Some states do not allow limitations on how long an implied warranty lasts, or the exclusion or limitation of incidental or consequential damages, so the above limitations or exclusions may not apply to you. This warranty gives you specific legal rights, and you may also have other rights which vary from state to state.



For further information or request for warranty work, please contact:  
Bestop Inc. Customer Service  
Toll-Free: (800)845-3567  
Main: (303)465-1755  
E-mail: [csbestop@Bestop.com](mailto:csbestop@Bestop.com)  
Website: [www.Bestop.com](http://www.Bestop.com)